

Biomass trajectories under different future catch scenarios

S.J. Johnston

Figure 1: Biomass trajectories associated with either the DAFF or SWG recommended TACs but for the resource as a whole. The trajectory under a zero future constant catch is also shown. The red dot shows the previous recovery target. Whereas results reported in this document assume the SWG’s recommendation for a TAC for 2016 to continue for subsequent seasons (SWG 1-step), the result shown below for the SWG also incorporates the SWG’s recommendation for a further decrease in the TAC to apply for the 2017 and subsequent seasons (SWG 2-step). The horizontal line corresponds to B2006. These projections assume a level of poaching equivalent to “Scenario 5” as previously agreed as the baseline poaching scenario by the SWG, and values are reported in Table 2.

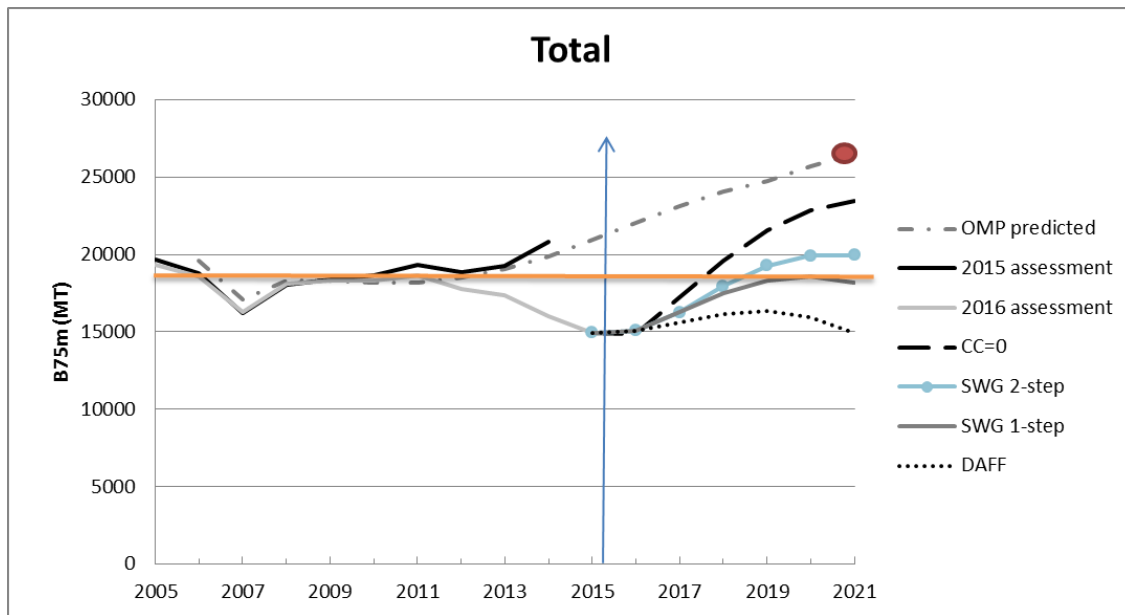


Table 1: Future catches associated with the various options shown in the above Figure 1. The final row gives the median of the B(21/06) value. Note the agreed target for the previous OMP was 1.37.

	CC=0 (with poaching)	DAFF (with poaching)	SWG-1 step (with poaching)	SWG-2-step (with poaching)	
	CC=0	CC=DAFF final decision for 2016	SWG 2016 recommendation continued into future (CC)	SWG recommendation involving a two step recommendation	
	2016-21	2016-21	2016-21	2016	2017-21
A1+2	0	81	30	30	20
A3+4	0	218	150	150	100
A5+6	0	227	100	100	100
A7	0	150	150	150	150
A8+	0	1248	840	840	420
Total	0	1924	1270	1270	790
Median B(21/06)	1.26	0.84	0.98	1.07	

Table 2: Poaching values assumed for each super-area (as agreed upon by the SWG reference case scenario for future poaching .This is what has been termed called “Scenario 5” – see DAFF WCRL SWG (2016)). Values for 1990+ only are reported. Poaching for all areas is assumed to increase linearly from zero in 1950 to the values for 1990 reported below.

	Total	A34	A56	A7	A8+
1990	250	28	28	19	175
1991	264	30	30	20	185
1992	278	31	31	21	194
1993	292	33	33	22	204
1994	306	34	34	23	214
1995	319	36	36	24	224
1996	333	38	38	25	233
1997	347	39	39	26	243
1998	361	41	41	27	253
1999	375	42	42	28	263
2000	389	44	44	29	272
2001	403	45	45	30	282
2002	417	47	47	31	292
2003	431	48	48	32	301
2004	444	50	50	33	311
2005	458	52	52	34	321
2006	472	53	53	35	331
2007	486	55	55	36	340
2008	500	56	56	38	350
2009	561	46	46	31	438
2010	623	37	37	24	525
2011	684	27	27	18	613
2012	745	17	17	11	700
2013	988	21	21	14	933
2014	1232	24	24	16	1167
2015-21	1475	28	28	19	1400

References

DAFF WCRL SWG document. 2016. WCRL SWG agreements on WCRL poaching trends. DAFF document, FISHERIES/2016/JUL/SWG-WCRL23.