

### WCRL SWG AGREEMENTS ON WCRL POACHING TRENDS

Following the presentation of Task Group document FISHERIES/2016/JUL/SWG-WCRL/14 at the SWG meeting on 22<sup>nd</sup> July 2016 regarding poaching trends and quantities, the following was agreed.

**A) NORTH : SOUTH SPLIT (A3-7 : A8+)**

North : South	1) 30 : 70	wt 100%
---------------	------------	---------

A key reason for the change from the 20 : 80 used previously is the high and likely increasing level of poaching known to be occurring in some northern areas.

Although this split is uncertain, only one option has been given as the uncertainty overall will be dominated by the range of options in C) below. Sensitivities could be explored later if considered necessary.

Note that the relative splits of poaching in the North area amongst A3+4, A5+6 and A7 remain as previously, so now become:

A3+4: 11.25%

A5+6: 11.25%

A7: 7.5%

**B) TREND: PRE-2008 (relative to 2008)**

1990 – 2008	1) 0.5 → 1	wt 100%
-------------	------------	---------

Pre-1990	1) 0.5 (i.e. constant)	wt 100%
----------	------------------------	---------

Previously this trend was taken to be flat from 1990 to 2008, but it is now considered more likely that an increase had taken place over this period, given also the increasing poaching for abalone over those decades. The same considerations about uncertainty as set out in A) above apply here too.

Note that the assumption that poaching commenced in 1950 and increased linearly to 1990 remains unchanged.

**C) TREND: 2008 – 2015 (relative to 2008, which is shown as 1 in all plots)**

Note that the entries on the next page are in the main in order from the highest extent of increase to the lowest extent.

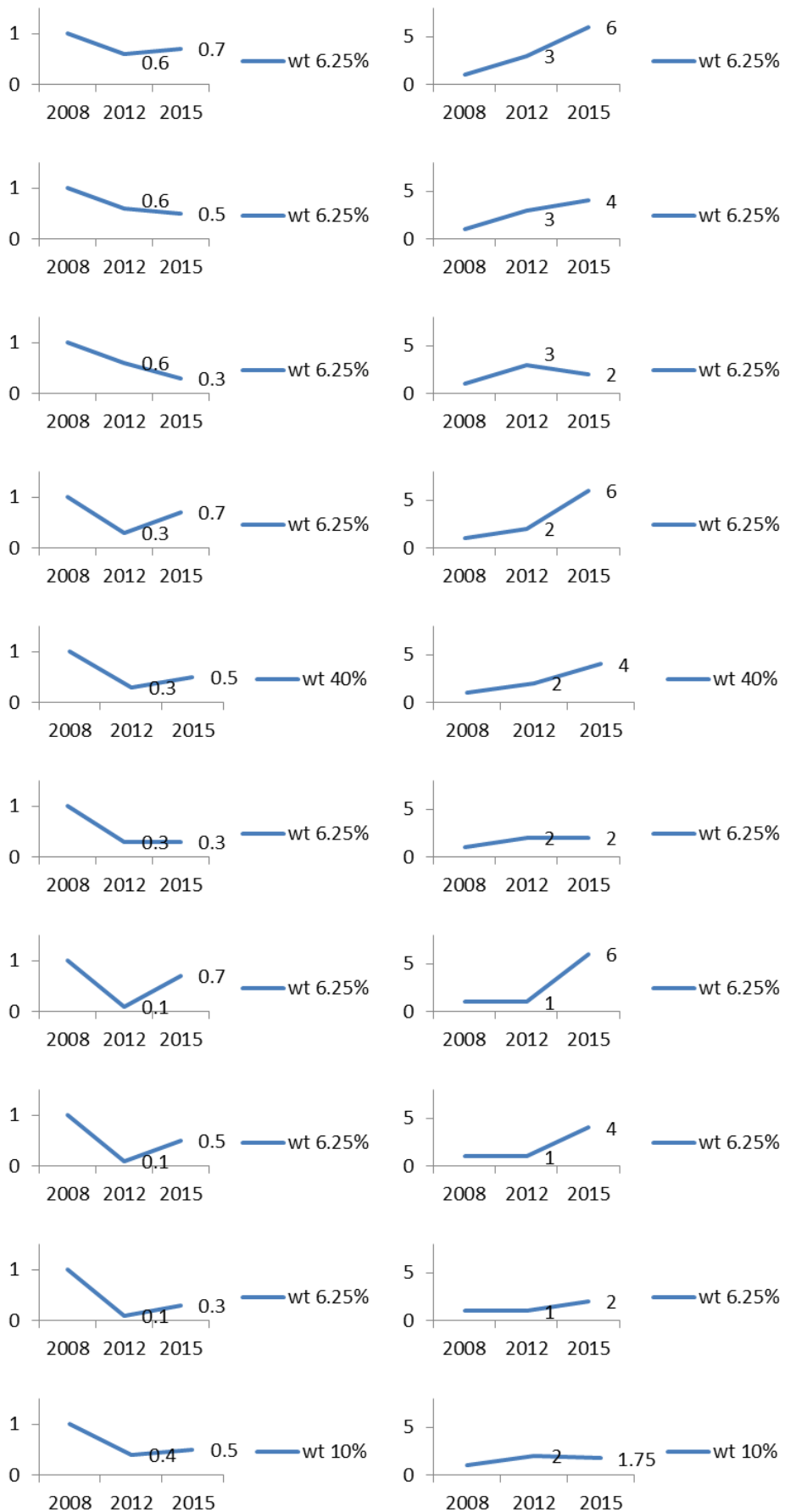
To ease the subsequent computational burden the corresponding north and south pairs of trends shown will be linked. Thus the weight assigned to each north and south member of a pair [1) to 10)] is the same.

The broad rationale used in assigning weights is:

- i) The central estimate (option 5)), which is considered the most likely, received the highest weight. The other options 1) – 4) and 6) – 9) received equal weighting.
- ii) Option 10), proposed by industry, was assigned a weight at the 22<sup>nd</sup> July meeting.

**NORTH**

**SOUTH**



**D) TREND: 2015 – 2016**

The 2016 value is assumed to be the same as for 2015.

**E) TREND: 2017+**

The default assumption is that the 2017+ values are the same as for 2016.

Sensitivities will be considered for a constant level for 2017+ which is either:

- a) a 20% increase of the 2016 value; or
- b) a 20% decrease of the 2016 level.

**F) ABSOLUTE VALUE**

Previously the level of poaching in 2008 was set at:

P <sub>2008</sub> :	1) 500 tons	wt = 0.6
	2) 250 tons	wt = 0.4

This is amended to:	1) 500 tons	wt = 0.8
	2) 350 tons	wt = 0.2

**Figure 1 shows the resultant poaching levels for the North (A3-7) and South (A8+) for option 5 and for both levels of poaching in 2008 in absolute terms(500 MT and 350 MT).**

The rationale for the 500 tons relates to the first (ZA Exports – ZA landings) column of Table 1 of the Traffic report (FISHERIES/2016/JUL/SWG-WCRL/22. Assuming that this difference reflects poached lobster exported suggests a level of about 500 tons being roughly the average for the years around 2008.

This first column of that Table 1 reflects an approximate doubling of poaching over the 2008 – 2014 period, which is less of an increase than indicated in section C). The difference may reflect an increase over this period in poached lobsters made available to the local market, of which there are some indirect indications.

The reason for including option 2) is to allow for the possibility that this increased supply to the local market has not been particularly large, so that poached lobster is near entirely exported. Option 2) reflects a situation where the section C) increase would result in a 2014 level of poaching as reflected in the first column of that Table 1.

Figure 1: Poaching trends for option 5 for both P2008 (poaching level in 2008) values of 500 MT (Left panels) or 350 MT (Right panels).

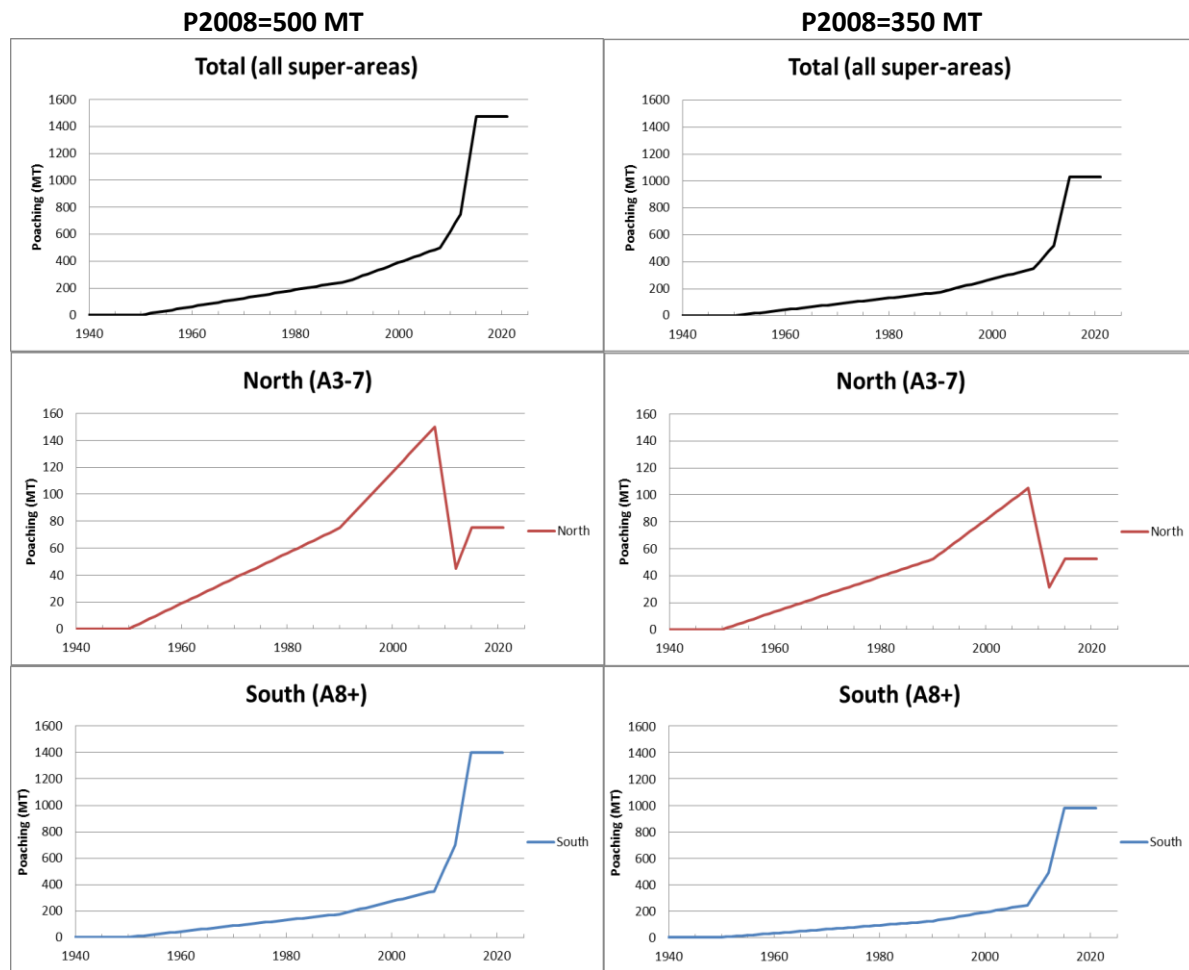


Figure 2: Total (i.e. all super-areas) poaching trends for all ten scenarios for P2008 (poaching level in 2008) values. The weighted average of all ten scenarios is shown as the black dotted line.

