

Further results for West Coast rock lobster

A. Brandão

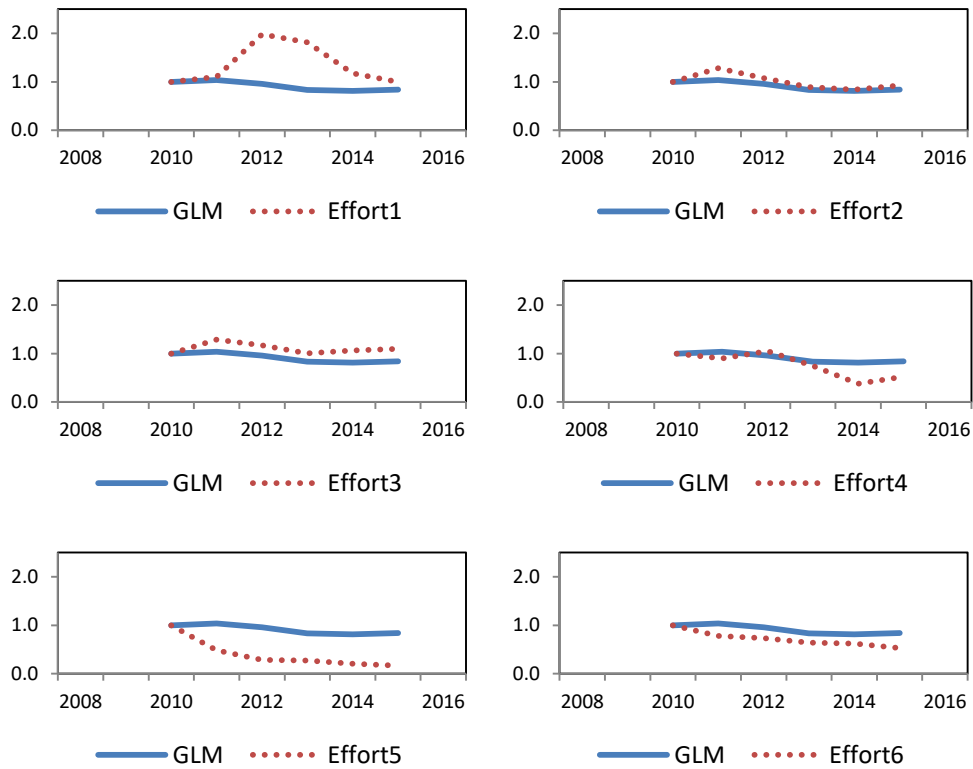


Figure 1. GLM Year effect for policing effort together with the individual policing effort types for Super-areas Super-areas 3+4+5+6. Results are shown for complete years only and normalised to 2010=1.

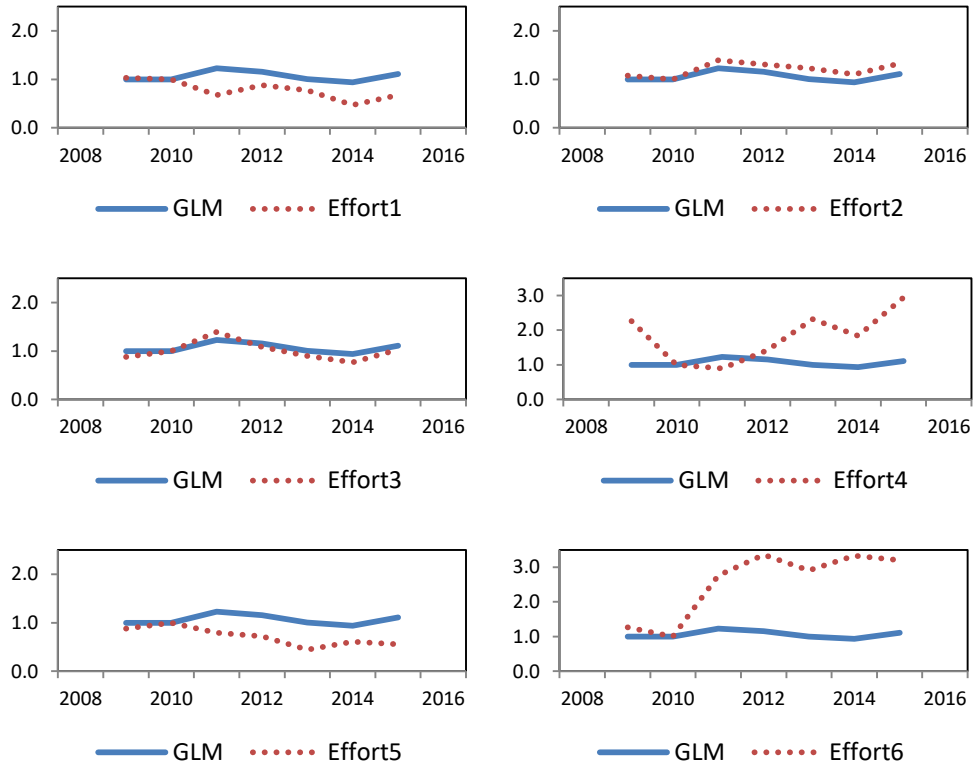


Figure 2. GLM year effect for policing effort and the data for the individual policing effort types for Super-areas Super-area 8+. Results are shown for complete years only and normalised to 2010=1.

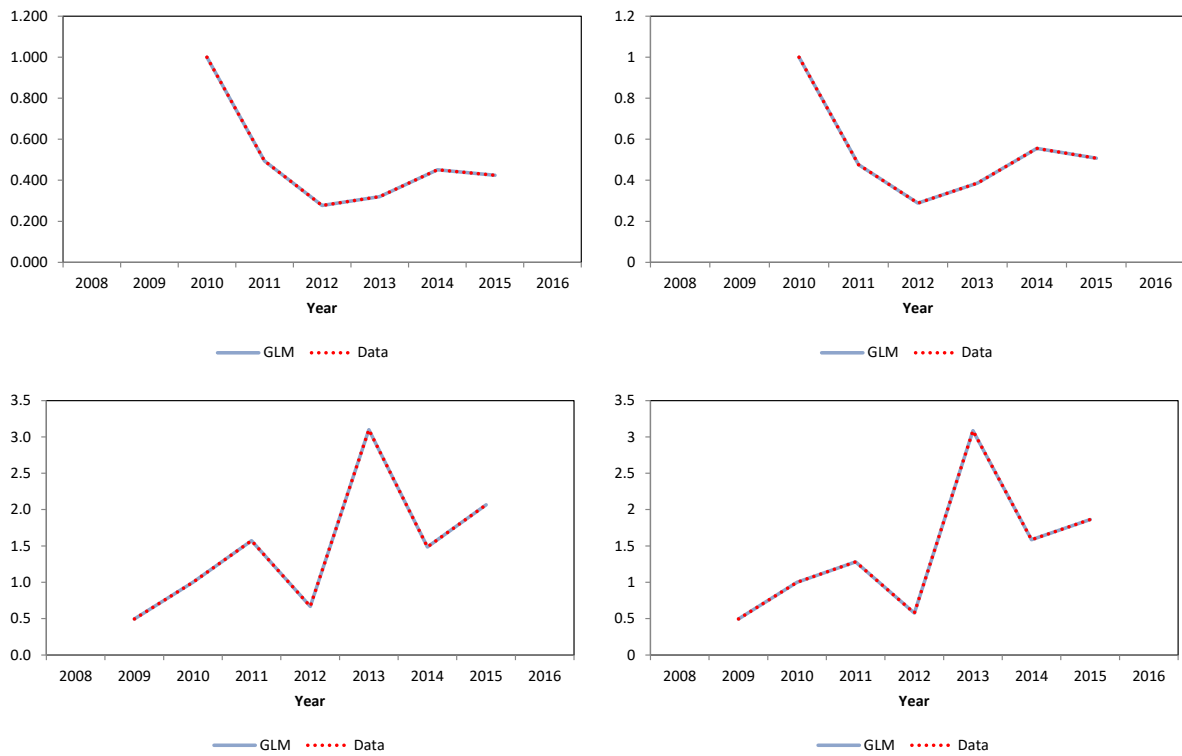


Figure 3. GLM year effect for the number of confiscations plus abandonments and the confiscation data for Super-areas 3+4+5+6 (top) and Super-area 8+ (bottom) are shown on the left hand side. The ratio of the number of confiscations plus abandonments (data) to GLM policing effort are shown on the right hand side. Results are shown for complete years only and normalised to 2010=1.

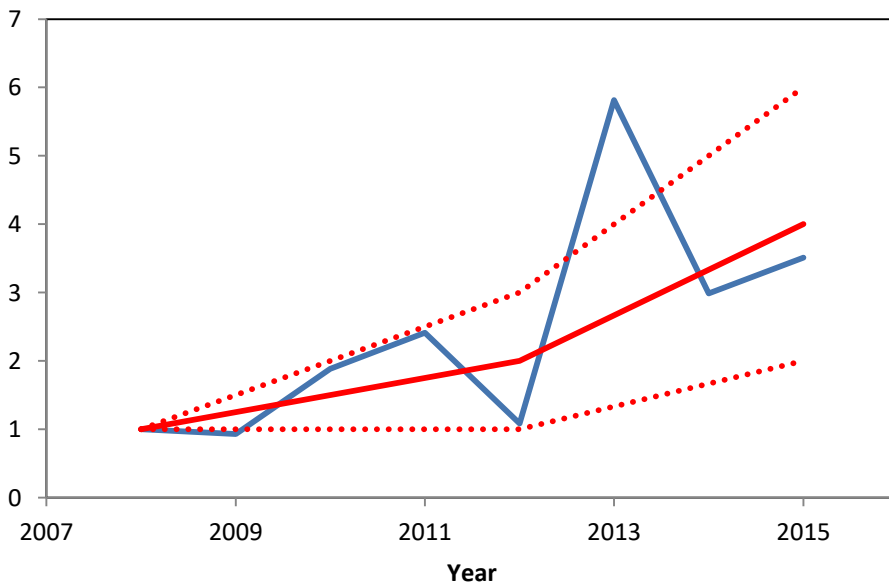
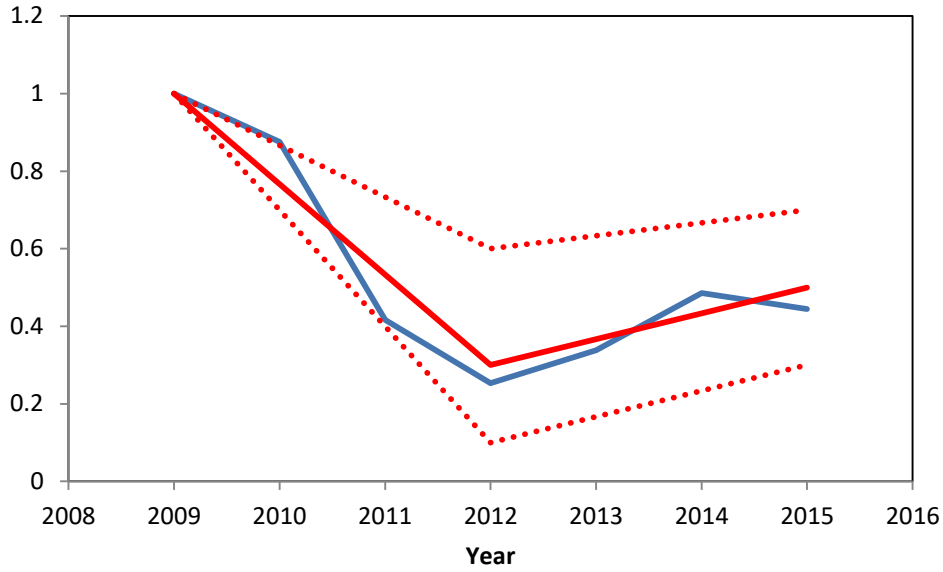


Figure 4. GLM ratio of the number of confiscations plus abandonments to policing effort for Super-areas 3+4+5+6 (top) and Super-area 8+ (bottom) with WCRL SWG agreements on the poaching trends. Results shown normalised to 2008=1 for Super-area 8+ or to 2009=1 for Super-area 3+4+5+6.